

# BMT TANDEM MEETINGS

February 22-26 2017

Orlando  
Florida

## Exhibit & Support Prospectus

### 2017 BMT Tandem Meetings Gaylord Palms Convention Center Orlando, Florida

#### CONTACTS

##### Meetings Manager

Tia Houseman  
tia.houseman@nmdp.org

##### Support Contact

Sherry L. Fisher  
slfisher@mcw.edu

##### Exhibitor Contact

BMT Tandem Office  
bmttandem@mcw.edu

#### OVERVIEW

The first BMT Tandem Meetings were held in 1995. Because of a significant overlap in constituency, the CIBMTR and the ASBMT combined their annual meetings to allow participants to optimize time and travel funds by attending two meetings in a single week. By combining the meetings, over 3,200 participants are expected, with approximately 20% from outside the United States. Historically, about 50% of attendees are physicians (MDs) and researchers (PhDs), 21% nurses, 11% advanced practice professionals, 10% clinical data coordinators, and 8% pharmacists.

#### IMPORTANT DATES

Oct 3	Early Registration Deadline	
Dec 16	Program Guide Recognition Deadline	
Feb 21	Exhibit Move-In	10:00 am - 5:00 pm
Feb 22	Exhibits Open	7:00 am - 2:00 pm
Feb 23	Exhibits Open	7:00 am - 2:00 pm
Feb 23	Reception	6:15 pm - 7:15 pm
Feb 24	Exhibits Open	7:00 am - 2:00 pm
Feb 25	Exhibits Open	7:00 am - 2:00 pm
Feb 25	Exhibit Move-Out	2:00 pm - 4:30 pm

**#BMTTANDEM2017**

# BMT Tandem Meetings History

## ASBMT

The American Society for Blood and Marrow Transplantation is an international professional membership association of more than **2,300** physicians, investigators and other healthcare professionals promoting blood and marrow transplantation and cellular therapy research, education, scholarly publication and clinical standards. From its beginning, ASBMT activities have been in eight broad areas, representing the interests of transplant clinicians and investigators and the patients they serve: Research; Representation; Clinical Standards; Regulation; Communications; Accreditation; Reimbursement; Recruitment and Training. The scientific program chair for ASBMT is **Marcel van den Brink, MD, PhD**, Memorial Sloan Kettering Cancer Center, New York, NY.

More information can be found at [www.asbmt.org](http://www.asbmt.org).

## CIBMTR

The Center for International Blood and Marrow Transplant Research (CIBMTR), a research collaboration between the National Marrow Donor Program® (NMDP)/Be The Match® and the Medical College of Wisconsin, provides a unique resource of data and statistical expertise to the scientific community for addressing important issues in hematopoietic cell transplantation (HCT). It is comprised of a worldwide network of HCT centers that share data on HCT outcomes and a Statistical Center that maintains a clinical database with information for over **425,000** HCT recipients from over **500** transplant centers in **52** countries. The CIBMTR is a voluntary research organization of basic and clinical scientists collaborating to address important issues in blood and marrow transplantation (BMT). Active in BMT research since 1972, the CIBMTR collects information on the results of BMT and uses this information to identify ways to improve transplant outcomes. The Scientific program chair for CIBMTR is **David Marks, MD, PhD**, University Hospitals Bristol NHS Trust, Bristol, United Kingdom.

More information can be found at [www.cibmtr.org](http://www.cibmtr.org).

The BMT Tandem Meetings will include scientific sessions, poster sessions, symposia and workshops on a wide variety of current issues in allogeneic and autologous transplants, including parallel conferences for advanced practice professionals, transplant nurses, BMT clinical research associates, BMT pharmacists, BMT administrators, as well as special sessions for pediatric physicians, medical directors and fellows-in-training.

# Educational Opportunities

## EDUCATIONAL CREDIT

Continuing Medical Education (CME) for physicians and contact hours for allied health professionals will be provided by the Medical College of Wisconsin. Nursing and pharmacy credits will also be available for some of the sessions.

## EDUCATIONAL OBJECTIVES

Upon completion of this CME activity, participants should be able to:

- Report on the state of the art in cellular therapy and blood and marrow transplantation;
- Analyze new methods and controversial issues in clinical management strategies for reducing toxicity and improving transplant outcomes;
- Assess new basic science information in the areas of immunogenetics, molecular biology, stem cell biology and immunology as it relates to hematopoietic stem cell transplantation;
- Review CIBMTR research accomplishments and set the scientific agenda for next year;
- Review accomplishments of ASBMT, including progress on organizational, societal and regulatory issues in blood and marrow transplantation;
- Report on contemporary principles in BMT nursing, pharmacy, data management, clinical research analysis, pediatric transplantation and transplant center administration.

# 2016 Attendee Demographics

2016 BMT TANDEM MEETINGS  
Hawaii Convention Center  
Honolulu, HI  
February 18 - 22  
Total Number of Registrants =  
**3221**

## PARALLEL CONFERENCES

- Advanced Practice Professionals
- Transplant Nurses
- BMT Clinical Research Associates
- BMT Pharmacists
- BMT Administrators
- Pediatric Physicians
- Medical Directors
- Fellows-in-Training

## PARTICIPANT DEMOGRAPHICS

**33%** Physicians (MDs) and Researchers (PhDs)  
**17%** Nurses  
**8%** Exhibitors  
**6%** Advanced Practice Professionals  
**4%** Pharmacists  
**5%** Fellows-in-Training

Domestic Attendees

**84%**

International  
Attendees

**16%**

## TOP COUNTRIES REPRESENTED

<b>2716</b>	United States
<b>92</b>	Canada
<b>68</b>	Japan
<b>51</b>	Australia
<b>33</b>	Germany
<b>25</b>	Turkey
<b>22</b>	China
<b>17</b>	Sweden
<b>16</b>	United Kingdom
<b>16</b>	Greece

# 2016 Supporters

Actinium Pharmaceuticals  
Adaptive Biotechnologies Corp  
AIDS and Cancer Specimen Resource  
Alexion  
Amgen, Inc.  
Astellas Pharma US, Inc.  
Biosafe America  
Blood Center of Wisconsin  
Celgene Corporation  
Cerus Corporation  
Chimerix, Inc.  
City of Hope  
Delete Blood Cancer DKMS  
Foundation Medicine  
Fresenius Kabi USA, LLC  
HistoGenetics  
Immucor  
IMMUDEX  
Incyte  
Janssen Biotech, Inc.  
Jazz Pharmaceuticals, Inc.  
Kashi Clinical Laboratories  
LabCorp  
LABS, Inc.  
Liaison Healthcare  
Management Science Associates, Inc.  
Mediware Information Systems  
Memorial Sloan-Kettering Cancer Center

Merck & Co.  
Midatech Pharma US, Inc.  
Miller Pharmacal Group, Inc.  
Miltenyi Biotec, Inc.  
Neovii Biotech NA, Inc.  
Novartis Oncology  
Oncology Nursing Certification Corp  
One Lambda  
Otsuka America Pharmaceutical, Inc.  
OTTR Chronic Care Solutions  
Oxford Immunotec  
Sanofi US  
Sarah Cannon  
Seattle Cancer Care Alliance  
Seattle Genetics  
Spectrum Pharmaceuticals  
Stafa Cellular Therapy  
STEMSOFT Software, Inc.  
stemTrak  
Takeda Oncology  
Telomere Diagnostics  
Terumo BCT  
Teva Oncology  
Theraworx Technology  
Transplant Solutions, LLC  
United Therapeutics  
Viracor-IBT Laboratories

# 2017 Exhibitor Information

RESERVE YOUR EXHIBIT **ONLINE** NOW!

## EXHIBIT MOVE-IN

**Tuesday, February 21:**  
10:00 - 5:00 pm

## EXHIBIT HOURS

**Wednesday, February 22:**

7:00 - 2:00 pm

**Thursday, February 23:**

7:00 - 2:00 pm

*Exhibitor Reception*

6:15 - 7:15 pm

**Friday, February 24:**

7:00 - 2:00 pm

**Saturday, February 25:**

7:00 - 2:00 pm

## EXHIBIT MOVE-OUT

**Saturday, February 25:**  
2:00 - 4:30 pm

## BENEFITS OF EXHIBITING

- Exposure to the world's top blood and marrow transplant physicians and allied health professionals
- A professionally assembled pipe and drape exhibit area featuring 10'x10', 20' or 30' exhibits.
- Meeting coffee breaks and food functions are located within the exhibit area
- Exhibits will appreciate traffic flow throughout the day into the scientific plenary, concurrent and symposia sessions and peripheral conferences.
- Two complimentary meeting registrations included
- Acknowledgement in the Program Guide and Mobile App

## EXHIBIT RATES

10' x 10' Exhibits		10' x 20' Exhibits		10' x 30' Exhibits	
<b>\$6,600</b>	10 x 10	<b>\$17,500</b>	10 x 20	<b>\$25,000</b>	10 x 30
<b>\$8,600</b>	10 x 10 <i>corner</i>	<b>\$19,500</b>	10 x 20 <i>corner</i>	<b>\$28,000</b>	10 x 30 <i>corner</i>

\***NEW!** Rates include an Exhibitor Reception in the exhibit area Thursday night from 6:15 - 7:15 pm

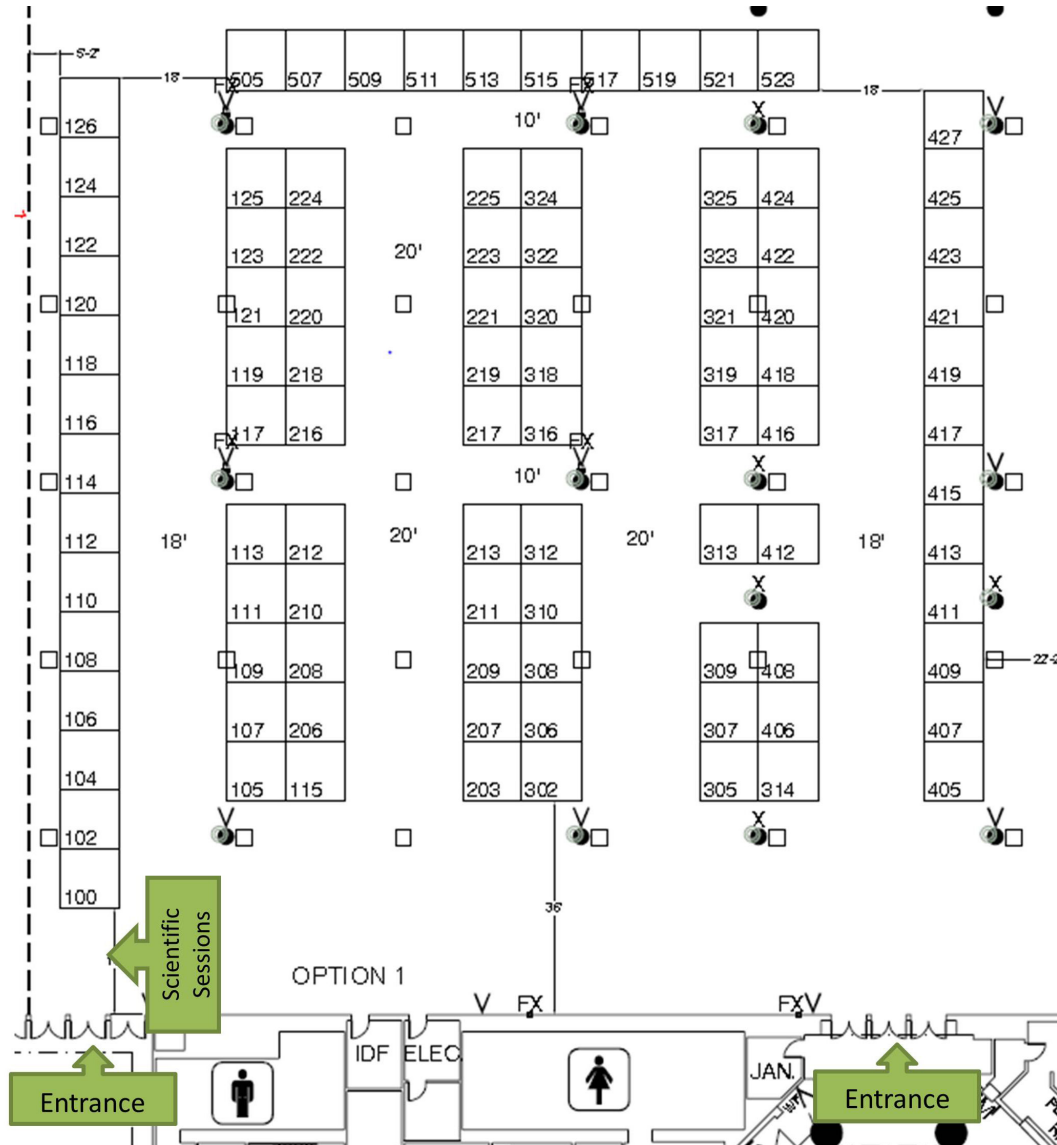
\*All Exhibit Rates are for 4 days and include 2 complimentary meeting registrations

\*Publishing companies pay 50% and non-profit companies pay 25% of the above listed rate

\*20x20 Exhibits are also available at the rate of \$35,000

# Exhibit Floorplan

## Gaylord Palms Convention Center - Exhibit Hall F



### BOOTH ALLOCATION POLICY

BMT Tandem Meetings Management will confirm exhibit space upon receipt of a signed electronic application form with payment in full. Receipt of the application form by the management shall not confer any claim to subsequent approval. Exhibit space will NOT be allocated until payment is received.

### EXHIBITOR KIT

A complete exhibitor kit, including rules and regulations, vendor contact information, shipping information and freight and labor deadlines will be available in **Fall 2016** and sent to each confirmed exhibitor.



# 2017 Support Opportunities

RESERVE YOUR SUPPORT OPPORTUNITY **ONLINE** NOW!

## BMT TANDEM MEETINGS SUPPORT

PLATINUM - **\$250,000**

GOLD - **\$100,000**

SILVER - **\$50,000**

BRONZE - **\$15,000**

(Does not include exhibit fees)

## MARKETING/PROMOTIONAL SUPPORT

- BMT Tandem Reception - **\$100,000** (partial sponsorships available)
- 2017 BMT Tandem Meetings Electronic Capture (former CD-ROM) - **\$70,000** (Dec. 16 deadline)
- Posters and Abstracts Online and on USB - **\$65,000** (Dec. 16 deadline)
- Registration Tote Bag (no product logo allowed) - **\$45,000**
- Product Theater in Convention Center (see supplement for details) - **\$35,000**
- ASBMT Public Service Award - **\$10,000**
- Daily Coffee/Refreshment Breaks - **\$10,000** each or all week for \$30,000
- CIBMTR Awards for Best Clinical Research Abstracts - **\$7,500**
- ASBMT Awards for Best Basic Research Abstracts - **\$7,500**
- CIBMTR Working Committee Meetings - **\$5,000** each or all 15 for \$60,000

## ADVERTISING OPPORTUNITIES

- Ad in Door Drop – (\$2,500-\$5,500) See rate card **Online - Coming Soon!**
- WiFi for Full Conference - **\$35,000**
- On-site Program Guide Book - **\$35,000**
- Abstract Book - **\$30,000**
- Meetings Events Mobile App - **\$25,000**
- Housing Web Banner with corporate logo-included in all confirmation emails - **\$25,000**
- Internet Access Center - **\$25,000**
- Meeting Events Digital Schedule Boards - **\$25,000** each or all 3 for \$65,000
- Name Badge Wallet (no product logo allowed) - **\$20,000**
- Pocket Guide Schedule at a Glance - **\$20,000**
- Preliminary Program Email Blasts (3) - **\$15,000**
- Speaker Ready Room (including on screen corporate logo) - **\$15,000**
- Water Bottles - **\$10,000**
- Ad space available in Biology of Blood and Marrow Transplantation (10% discount for exhibitors)

- Support of any of the above items Includes acknowledgement in the Program Guide and on-site signage as applicable.
- Companies providing \$30,000 or more in support for meeting components in non-CME Educational Support listed above are eligible for a 10 x 10 exhibit at no cost. ACCME guidelines preclude using support of CME Educational Activities as credit toward an exhibit.
- **Additional advertising opportunities at the Gaylord Palms are available! Please contact us for available options.**



# 2017 Support Opportunities

## EDUCATIONAL SUPPORT

- Mealtime CME Symposia - **\$70,000-\$120,000** each
- Plenary Sessions - **\$65,000** each
- Transplant Nursing Conference - **\$50,000**
- Pediatric BMT Educational Track - **\$50,000**
- Clinical Education Conference (NP, PA-C, etc) - **\$50,000**
- Clinical Research Associates Conference - **\$50,000**
- BMT Pharmacists Conference - **\$40,000**
- BMT Administrative Directors Conference - **\$40,000**
- Concurrent Scientific Sessions - **\$35,000** each
- BMT CTN Coordinators Conference - **\$30,000**
- Poster Sessions (2) - **\$25,000** each or both for \$45,000
- WBMT Scientific Session - **\$25,000**
- E. Donnal Thomas Lecture - **\$25,000**
- Mortimer M. Bortin Lecture - **\$25,000**
- Transplant Fellows-in-Training Orientation - **\$5,000**
- Meet the Professors - **\$5,000** each or all 8 for \$30,000

### SATELLITE SYMPOSIA

We offer high-quality mealtime CME sessions unopposed by other scientific meetings throughout the week. A great opportunity to host a meal function for physicians and other professionals in the BMT field.

VISIT OUR [WEBSITE](#) FOR  
MORE INFORMATION!

### PRODUCT THEATERS

We are offering Product Theaters on site this year. These sessions offer a great opportunity to host a function for physicians and other professionals in the BMT field.

VISIT OUR [WEBSITE](#) FOR  
MORE INFORMATION!

## SUPPORT CONTACT

**Sherry L. Fisher**  
slfisher@mcw.edu

# 2017 Scientific Topics

<b>End of Life Care/Making Every Day Count</b> - <i>E Petersdorf, Chair</i>	Plenary \$65,000
<b>Acute GVHD</b> - <i>J Ferrara, Chair</i>	Plenary \$65,000
<b>Non ALL CAR-T Cells and TCR Gene Therapy</b> - <i>E Morris, Chair</i>	Plenary \$65,000
<b>Future of BMT - Immunotherapy of Cancer</b> - <i>A Leen, Chair</i>	Plenary \$65,000
<b>Aging - Treating the Older Patient</b> - <i>A Artz, Chair</i>	Plenary \$65,000
<b>Economics of BMT vs New Therapies, Costs</b> - NMDP Session - <i>Chairs TBD</i>	Concurrent \$35,000
<b>Does transplant have to be expensive?</b> - WBMT Session - <i>J Szer and Y Kodera, Co-Chairs</i>	Concurrent \$35,000
<b>Autoimmune Disease and BMT</b> - <i>J Snowden, Chair</i>	Concurrent \$35,000
<b>Chronic GVHD</b> - <i>B Blazer, Chair</i>	Concurrent \$35,000
<b>Statistical Session</b> - <i>B Logan, Chair</i>	Concurrent \$35,000
<b>Haplo BMT</b> - <i>L Luznik, Chair</i>	Concurrent \$35,000
<b>Primer on New Multiscale Biology/Immunology for Transplanters</b> - <i>R Negrin, Chair</i>	Concurrent \$35,000
<b>Late Effects</b> - <i>M Battiwalla, Chair</i>	Concurrent \$35,000
<b>Challenges to BMT in Older Patients: Myeloma, Lymphoma/CLL</b> - <i>H Einsele, Chair</i>	Concurrent \$35,000

## SPECIAL SESSIONS

<b>E. Donnall Thomas Lecture</b>	\$25,000
<b>Mortimer M. Bortin Lecture</b>	\$25,000

## UPCOMING BMT TANDEM MEETINGS

**2018** Salt Palace Convention Center, Salt Lake City, UT - February 21 - 25

**2019** Hilton Americas Convention Center, Houston, TX - February 20 - 24

# Additional Information

## BMT Tandem Meetings Office

bmttandem@mcw.edu

[Website coming soon!](#)

## Gaylord Palms Convention Center

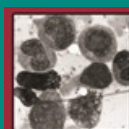
6000 West Osceola Parkway

Kissimmee, Florida 34746

407-586-0000

[Website](#)

**Freeman Exhibitor Kit  
released in FALL 2016!**



**ASBMT**<sup>TM</sup>  
American Society for Blood  
and Marrow Transplantation



**CIBMTR**<sup>®</sup>  
CENTER FOR INTERNATIONAL BLOOD  
& MARROW TRANSPLANT RESEARCH

## PUBLICITY

Worldwide promotional mailings to blood and marrow transplant centers, notices in CIBMTR and ASBMT newsletters (worldwide distribution), flyers distributed at worldwide hematology, oncology and transplant meetings and conferences. Publicity on the Internet including the CIBMTR and ASBMT websites.

## RECOGNITION

All supporters will be acknowledged in BMT Tandem Meetings publicity materials, on-site meeting signage, in CIBMTR and ASBMT newsletters, in the meeting program, and related publications. The deadline for inclusion in the final meeting program is **December 16, 2016**.

## METHOD OF PAYMENT

Checks should be made payable to The Medical College of Wisconsin/BMT Tandem Meetings and sent to the attention of Sherry Fisher, CIBMTR, The Medical College of Wisconsin, 9200 W. Wisconsin Ave, Ste. C5500, Milwaukee, Wisconsin 53226. The Tax Identification number of The Medical College of Wisconsin is **39-0806261**. Contributions are tax deductible as allowed by law.

**RESERVE YOUR EXHIBIT AND SUPPORT  
OPPORTUNITY TODAY!**

**BMT TANDEM  
MEETINGS**  
February 22-26 2017

*Orlando*  
*Florida*